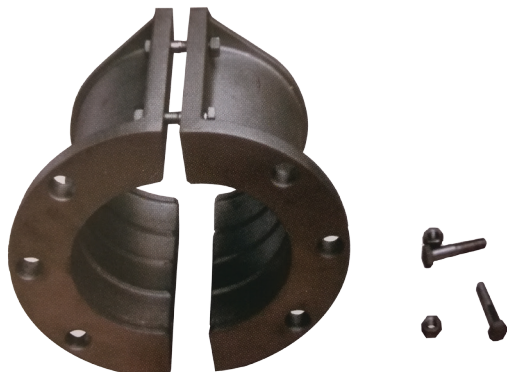




ALUMINUM COUPLINGS FOR IDROCICLONE

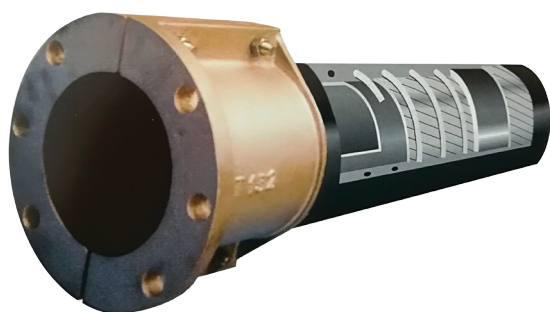


Reusable aluminum couplings are suitable to be fitted to the external cover of our IDROCICLONE hoses.

The fitting is easy and fast: it is only necessary to join the two semi-couplings by fixing the rubber hose inside and attaching the bolts. Once the two semi-couplings are fixed, the resistance of the system is assured by internal rounded ribs, which are located on the internal part of the couplings and which can be fixed on the hose cover without damaging the hose surface. With this fitting system, the abrasive material does not get into contact with the metal coupling. In this way, there is no wear on the couplings and they can be used again, even if the hose is worn out.

Since the aluminum is a light metal, a better hose handling is granted.

Flanges compatible with UNI EN 1092-1 PN 10 (ex UNI 2277).



Hose's inside diameter		Nipple lenght	Couplings' dimensions				Distance between holes	Appr. weight
			I.D.		Flange's dimension			
			min	Max	Outer diameter	No. of holes and ø		
[mm]	[in]	[mm]	[mm]	[mm]	[mm]	[n°] x [mm]	[mm]	[kg]
51	2,00	100	64	70	165	4x18	125	1,90
63,5	2,50	100	75	80	185	4x18	145	2,70
76	3,00	100	94	102	200	4x18	160	2,90
102	4,00	150	118	124	225	6x18	180	4,00
127	5,00	200	147	153	250	6x18	210	5,50
152	6,00	200	172	180	285	6x22	240	7,10
203	8,00	250	228	236	340	6x22	295	10,07
254	10,00	250	272	280	390	10x22	350	12,20
305	12,00	250	330	338	445	10x22	400	13,30